

**Indonesia, Sulawesi-Lombok Programme for Earthquake and Tsunami Infrastructure
Reconstruction Assistance (PETRA)
Quarterly Progress Report April – June 2020, with provisional updates as per August 2020**

Sector situation:

In the 2nd quarter 2020, the Corona Virus Disease (COVID-19) pandemic has negatively impacted on almost all sectors of the country. Government of Indonesia (GoI) had issued policies to adjust accordingly, namely, policy on refocusing and reallocating budget to accelerate COVID-19 response including improved health facilities and services, provided cash transfer for low income households, provided economic stimulus for SMEs and postponed of local general election till December 2020. Development plans and budgeting at national and local level experienced major realignments. These policies to some extent have slowed down the post-disaster rehabilitation and reconstruction project both in Central Sulawesi and West Nusa Tenggara province.

In the scope of PETRA Project, despite challenges due to social distancing during the pandemic, the Resilience and Reconstruction Unit of UNDP CO and PETRA Project teams continued implementing project activities with necessary adjustments on business processes and activity implementation mechanisms adapting with the Work-from-Home policy, including practicing newly-introduced ways to best utilizing online modality in holding consultations with local government stakeholders, coordination with project partners and in monitoring progress and issues on the ground.

Action Plan for Rehabilitation and Reconstruction (Renaksi RR). Housing rehabilitation and reconstruction remained the focus of both Central Sulawesi and West Nusa Tenggara in this quarter. Per June 2020, it was reported that in Central Sulawesi the completion of housing construction reached 25.35%, which increased only less than 2%¹ from as end of March 2020. Whereas, in West Nusa Tenggara Province, the rehabilitation and reconstruction of heavily damaged houses have reached 86.80% out of total target 226,204 units². In May 2020, the Government of West Nusa Tenggara province has then re-extended the emergency to recovery transition period till August 2020 due to incomplete housing reconstruction project.

Coordination with local governments, project implementation partners, and beneficiaries. During the 2nd quarter of 2020, several coordination and consultation meetings had been conducted virtually. It was recorded that more than 20 online meetings with National as well as with both local governments have been done through online platforms, i.e., Zoom. Mostly, coordination and consultation meeting on the design of targeted subprojects. Coordination with implementing partners is intensified through both Zoom meetings and email exchanges. Field monitoring was exercised through instant messaging, i.e., WhatsApp, and phone calls to beneficiaries in locations with poor data connection.

Anticipated prolonged mobility limitation due to COVID-19 pandemic, PETRA project has produced videos of nine targeted community infrastructures for the purpose of virtual verification process of the IMDFF-DR Secretariat.

Progress and developments during the Reporting period:

¹ Report of Shelter Sub Cluster Central Sulawesi, June 2020

² Progress Rehab Rekon Rumah Pasca Gempa Bumi NTB – TPK Rehab Rekon NTB, Juni 2020

To ensure PETRA project is on the track during the COVID-19 pandemic, UNDP has taken some adaptation measures, namely, informing stakeholders on UNDP strategy as well as commitment to keep PETRA project implementation is on the track, optimizing online platform application for regular coordination and consultation meeting, video documentation for virtual site visit, and contextualizing CSOs partner activities with current situations in the village. As results, some milestones had been accomplished.

Key achievements in Q2 to mid-Q3 (August) 2020

- Invitation to Bid (ITB) process for Construction of Health and School Facilities in West Nusa Tenggara (Ref No. ITB-UNDP-PETRA-92264-002-2020) began in May, with bid solicitation period started on 11th May to 13th July. Bid opening was conducted on 14th July and continued with bids evaluation which completed on 7th August. The Bid Evaluation Report submitted to UNDP's Advisory Committee on Procurement at New York Headquarters for final review and approval;
- The ITB process for Construction of Inpatient Buildings, Pharmacy and Maternity Building in Two Hospitals in Central Sulawesi (Ref No. ITB-UNDP-PETRA-92265-003-2020) began in June, with bid solicitation period started on 3rd June to 13th July. Bid opening was conducted on 14th July and continued with bids evaluation which was completed on 28th August. The Bid Evaluation Report submitted to UNDP's Advisory Committee on Procurement at Regional Office Bangkok for final review and approval;
- The ITB process of Construction of Two Landfills and Supporting Facilities in Central Sulawesi (Ref No. ITB-UNDP-PETRA-92267-004-2020) began in mid-August, with bid solicitation period started on 20th August and to be closed by 28th September.
- The DEDs and Tender Document of 21 Schools and 2 Primary Healthcare in Central Sulawesi has been completed and the ITB for construction is planned to be launched by early September 2020;
- The construction of Commodity Kiosks of Genggelang Market and Clean Water Supply and Distribution installation of Birisan Nangka, Sambik Elen village - North Lombok started by the end of July and August 2020;
- The completion of curriculum development of livelihood-related trainings in North Lombok and East Lombok, West Nusa Tenggara province.

Annex 1 highlights progress of Q2 with provisional updates as per August 2020 against each output and activity. Overall, the project is still progressing on track, yet at slower pace due to COVID-19 pandemic.

Output 1. The geological survey as part of key activity 1; Provide support to the finalization/updating of the Multi-Hazard Risk Assessment and Mapping for Central Sulawesi and Lombok, has been completed in both provinces as the final report was submitted by the National geological Agency's experts. The report furnished solid scientific evidence which further helps the design consultants for structural design as well as in educating local stakeholders for build-back better and safer principle.

Recommendations from the geological survey and investigations that incorporated into PETRA subprojects' structural design including, among others, i) Shallow foundation is suggested to be applied at all locations and the bearing layer to be put above groundwater level (less than 4.5 m below the surface), and ii) the concept of foundation structure design is suggested to interlock between each component to anticipate potential lateral spreading and weaknesses due to some cracks near the surface.

The lessons learnt that could be drawn from this activity were; 1) Geological survey in post-disaster rehabilitation and reconstruction helps affected government, community as well as other DRR practitioners, gain better information and insights in rehabilitation and reconstruction planning and design; 2) Although the geological investigations require more time, it is undeniably a worthy and an important steps to be done in the

post-disaster rehabilitation and reconstruction project, therefore future reconstruction in the geological disaster prone areas should allocate more time and resources on such activity; and 3) The result of Geological investigations consequently affect the cost estimates of targeted infrastructures for reconstruction, and therefore the budget plan in a post-disaster reconstruction context should be higher compared to the national standard construction unit cost.

Construction tender for Output 1 subprojects in West Nusa Tenggara (*ITB 002 for Construction of Health and School Facilities in Lombok*) was launched in May 11th, 2020, followed by 1st pre-bid conference on May 19th, and the 2nd in June 12, 2020. There were 39 potential bidders have attended both pre-bid conferences that conducted through Zoom application. Seven potential bidders have carried out site visit between 2nd to 9th of June 2020. The construction tender for two hospitals (*ITB 003 for Constructions of Inpatient Buildings, Pharmacy and Maternity Building in Two Hospitals in Central Sulawesi*) was launched in June 3rd, 2020. The pre-bid conference was done in 6th June 2020 through Zoom, attended by 12 potential bidders. In addition, to provide equal opportunity for potential bidders that unable to conduct site visit considering the COVID-19 pandemic, series of videos of targeted sub projects in both provinces have been produced as a virtual site visit. Those videos were uploaded into UNDP e-tendering system. The contractor for both ITB 002 and ITB 003 in West Nusa Tenggara and Central Sulawesi is expected to be selected by next quarter.

Output 2. In the 2nd quarter of 2020, the CSOs partner in West Nusa Tenggara and Central Sulawesi were encouraged to do re-planning and conduct risk analysis due to COVID-19 crisis. Despite the situation, CSOs partner have continued project implementation on the ground with some adjustments and innovations. For example, *Paluma Nusantara* in North Lombok trained community members to produce more than 200 dozen of WHO standard mask that contribute to fulfilling the mask shortage in North Lombok during April 2020. The masks were purchased by COVID-19 task force of North Lombok with IDR 50.000 per dozen to support community livelihood during the crisis times. In addition, the WVI in East Lombok have shifted their training methods from on-site training into distance training by providing tutorial video. PETRA team provided technical inputs for the training modules to ensure topics/themes covered in training relevant with the needs of target groups. PETRA team and CSO partners have also developed the Cash for work guideline that integrated with COVID-19 protocol, gender and disability aspects.

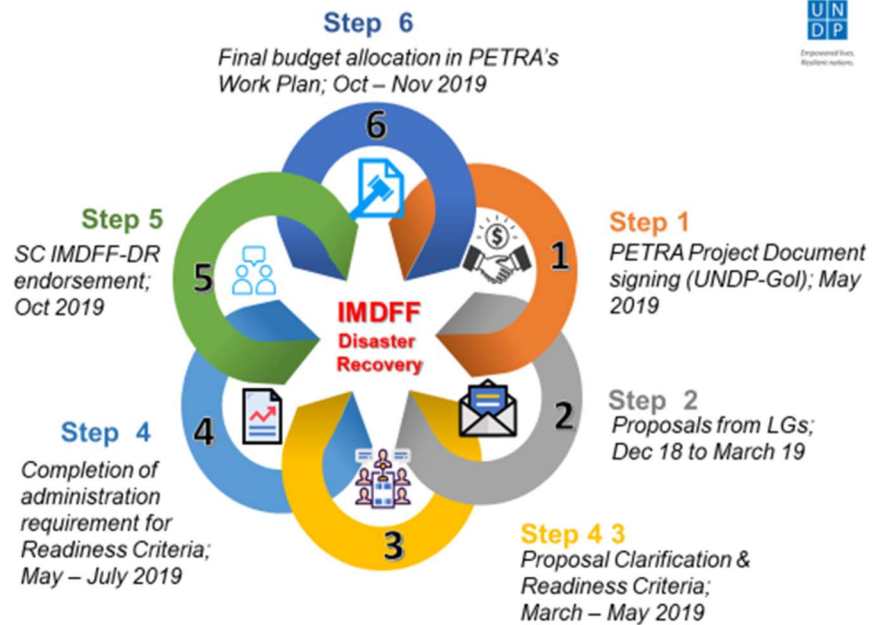
The community-led processes for the identification and prioritization of critical recovery of local economic infrastructure in both provinces are completed. The remaining process is the verification and the approval by the IMDFF-DR Secretariat. As reported in the previous quarter, there were 7 out of 17 community assets that have been verified and approved by the secretariat; 3 out of 8 community infrastructures in West Nusa Tenggara province (two irrigation canals and one market) and 4 out of 9 in Central Sulawesi (two markets, one bridge and two irrigation canal). To ensure the 10 remaining targets are meet the 8 readiness criteria and following the build-back better and safer principle, in between late of May and early June 2020, project team in collaboration with CSO's partners have collected geological-related data in both provinces with guidance from the National Geological Agency, and send it to the Agency for analysis. Due to COVID-19 crisis which caused limitation for field verification, the project team is providing video documentary as virtual verification to the IMDFF-DR. It is expected that in the 3rd quarter 2020, all identified targeted community infrastructures are verified and approved.

Coordination with the Indonesian Multi Donor Fund Facility for Disaster Recovery (IMDFF-DR)

PETRA Project and RRU Programme teams have been maintaining regular communication and coordination with IMDFF-DR specifically with the apparatus at its Secretariat. In the Q2 to mid Q3, there were number of Zoom meetings held and discussed about the implementation progress, issues and challenges specifically in understanding that COVID-19 pandemic has become major challenge to project implementation.

IMDFF – DR

IMDFF-DR (Indonesia Multi Donor Fund Facility for Disaster Recovery) established on 30th December 2009 through an MoU between Gol with the UN as Administrative Agent and WB as Trustee; it functions as a fixed mechanism to mobilize and administer grant funds which purposed as *gap filler* and *catalyst* contributing to post-disaster rehabilitation and reconstruction efforts in Indonesia.



Update of time schedule:

Limitations on day-to-day activities implementation following social distancing policy due to COVID-19 pandemic has been a major challenge to maintain the planned time schedule, specifically for Output 1. This situation has increased the complexity and challenges for completing DEDs and tender documents in time, and to conduct tender process with normal duration.

Prior to COVID-19 pandemic, the project had to allow more time for completing two milestones: (a) sites survey and investigation, and (b) design and preparation of tender documents. The first milestone experienced more time to complete due to thorough investigation by the National Geological Agency for assuring that the sites are safe for reconstruction; this sequentially affect the design process, which on the other side had also involved extensive stakeholders consultation to assure acceptance and commitment of National and Local Governments on the target facilities.

When the COVID-19 pandemic hits by end of Q1, remaining stakeholders' consultations to finalize the DEDs had to be conducted in a mixed of online and offline approaches, i.e. through online meetings, and distribution of technical drawings physically to respective users of target facilities in areas with poor connectivity. The tender processes had also need to be extended due to online working modality.

While delays in overall implementation have been forecasted by the end of Q1 2020, a clearer forecast has been seen during Q2. By June 2020, it is forecasted that the Project implementation in overall will likely experience delay for about 6 (six) months, which will then prolong the initial operational closure date from December 2021 to June 2022. Updated time schedule is enclosed as Annex 5 (Multi Year Work Plan).

Costs and Finances:

The financial expenditures in Q2 2020 have increased, as per June 2020, delivery rate reached Euro **from** total budget (please refer to Annex 6). A budget realignment is foreseen; however the details of proposed realignment will likely be able to be provided during or after Q3, due to the tendering activities of 4 reconstruction packages in West Nusa Tenggara and Central Sulawesi are still ongoing and forthcoming thus the figures may vary.

Outlook, recommendations and issues to be decided upon:

Entering 3rd quarter, the GoI launched the new normal which allows people to get back to normal life by applying COVID-19 protocol especially for economic and public services sectors. This step, on the other hand may bring opportunity for project to prevent possible delays in some activities. However, it may also come with high risk being imposed due to direct interaction in the field. In addition, getting back to office will not be the same as before the pandemic. Some measurements will be taken carefully to ensure the safety of all staffs. For example, personal protective equipment (PPE) for field visit will be provided as well as phycological aspects of staffs is also considered.


Despite the new normal policy, the IT based approach, such as online training or meeting are encouraged to be applied. Particularly for Output 2 that required active engagement with community. Face to face interaction with beneficiaries, if needed to be taken, it should obey the COVID-19 preventive measures. Raising awareness on the risk of being imposed to COVID-19 should be done accordingly. For instance, PETRA project's Cash for Works that integrated with COVID-19, gender and disability will be used tightly.

CONDUCTING STAKEHOLDER CONSULTATION MEETING AMIDST COVID-19 PANDEMIC

Consultation Meeting for the Preliminary Engineering Designs of 21 Schools and 2 Central Health Centers as part of Post Disaster Rehabilitation and Reconstruction Program in Central Sulawesi

PETRA called for a stakeholder consultation for preliminary designs of puskesmas and schools in Central Sulawesi Province. With face-to-face interaction now unlikely to be possible due to the current COVID-19 crisis, stakeholders are challenged to discover and employ a new way of meeting, such as virtual ones.

To some stakeholders, the online meeting was unfamiliar territory. PETRA anticipated this challenge by conducting a pre-event survey to all stakeholders about their capacity to join the online session, producing written materials, and providing a brief guide to the online meeting software. Stakeholders were also updated on the key project progress through text-based messaging and telephone engagement prior to the meetings. In each session, it is essential to create an experience that is just as effective as an in-person meeting. Therefore an online meeting etiquette or housekeeping was explained at the beginning of every session.



Of the 23 priority targets, only three targets were unable to join the online session due to a lack of internet connectivity. They were consulted using the telephone instead. Stakeholders appreciated the inclusive designs. They expressed their gratitude and hope that the reconstruction of their respective facilities will be carried out on schedule despite the COVID-19 restrictions.

Online meeting is not just about the audio and video; it is also about working together towards the project progress. Two values were underlined as the outcome of this series of consultation sessions. First, the stakeholders are able to have a meaningful relationship with PETRA during this challenging time, and second is the emotional value that is the excitement of the design launch. A good sense of teamwork, a solid network management, and an interactive setting that emphasized how people connect are the essential aspects of this achievement.

By Sukma Impian Riverningtyas

REFLECTION POINT:

Information disclosure and stakeholder engagement are the cornerstones of maintaining the social impacts of projects and fundamental principles of PETRA's ESMP. During the COVID-19 pandemic, effective process, system, and tool become even more critical in stakeholder engagement strategy through online consultation meeting. Factors to consider in developing an online meeting include connectivity, software literacy, interactive set-up, and technical team to help co-facilitate the meeting. It is good to have a team in charge of the technical side that consists of few people who will support as co-facilitators to monitor the time, the chatbox, and the participants.

In the context of project monitoring during new normal, there will be no significant issues since during Q2, project has experiences conducted coordination, communication and consultation through online platform with its local networks. In terms of communication, PETRA activities will continue to be promoted and published via social media such as Twitter and Instagram as had been done in previous reporting period. The video documentation of baseline for Output 1 and 2 activities will be conducted with some adjustments on the script considering schooling from home policy remains being applied, as well as to assure preventive measures during stakeholder interviews.

UNDP keeps communicating with PETRA's target beneficiaries, government and implementing partners regularly to ensure all

stakeholders on UNDP's commitment in reconstruction project despite the COVID-19 crisis.

In the spirit of delivering more wider results in PETRA's area of assistance in Central Sulawesi and West Nusa Tenggara, UNDP has been in collaboration with the Indonesia's Amil Zakat Agency (BAZNAS) and the Jakarta Ambassadors' Golf Association (JAGA). In this case, UNDP ensures that each contribution will not be overlapped and utilized dedicatedly for the specific purpose as mandated by each of the Donors, and specifically other contributions will not implicate on recognition of any facility and/or activities supported by the German government funding through KfW. UNDP assures that KfW's financial support is solely utilized for PETRA's

scope of work. Using the area-based approach, the scope of activities from these partnerships are complementing to PETRA's, as in the followings:

1. Partnership with BAZNAS in the context of community livelihood recovery in Sambik Elen village- West Nusa Tenggara and in Tuva village – Central Sulawesi. BAZNAS committed on supporting the livelihood recovery of targeted communities through provision of skills training and micro startup grants, while PETRA project focusing on reconstruction of community infrastructure, i.e. clean water supply and distribution network (NTB), and suspension bridge (CS). BAZNAS has been operating with its own resources covering the activity inputs and operating costs. The Reconstruction and Resilience Unit (RRU) and PETRA Project Management Unit (PETRA PMU) based in both provinces in this regard played the role in coordination and oversight of activities on the ground, while for partnership management and activity programming are directly managed by the Innovative Financing Lab team in UNDP Country Office.
2. Partnership with JAGA is specifically taking place in West Nusa Tenggara, which will be focusing at supporting the respective Local Government Unit, i.e. District Health Office in terms of provision of basic medical equipment and supplies for some of health facilities to be reconstructed through PETRA Project. Similar to the role as in the above (point 1), the RRU and PETRA PMU are in the role of activities coordination and oversight, while the procurement and delivery process will be directly managed by UNDP Procurement Team at Country Office. On partnership management and activity programming are directly managed by the South-South Triangular Cooperation Team in UNDP Country Office.

For the remaining period of Q3 2020, the Project will be focusing at:

- a) Contract award and contractor's mobilization for Construction of Health and School Facilities in West Nusa Tenggara (Ref No. ITB-UNDP-PETRA-92264-002-2020);
- b) Contract award and contractor's mobilization for Construction of Inpatient Buildings, Pharmacy and Maternity Building in Two Hospitals in Central Sulawesi (Ref No. ITB-UNDP-PETRA-92265-003-2020);
- c) Completion of ITB's solicitation for Construction of Two Landfills and Supporting Facilities in Central Sulawesi;
- d) Responses on clarifications, if any, to the Invitation to Bid (ITB) for reconstruction of 23 Schools and 2 Puskesmas in Central Sulawesi;
- e) Design works of targeted community infrastructures in both Central Sulawesi and West Nusa Tenggara provinces - for those cleared by IMDFF-DR Secretariat.
- f) Construction works of 2 community infrastructures – the Commodity Kiosks of Genggeling Market and Clean Water Source and Distribution Installation in North Lombok, West Nusa Tenggara province.
- g) Facilitating livelihood related technical trainings in North Lombok and East Lombok West Nusa Tenggara province.

List of annexes:

Annex 1. Quarterly Progress Report Matrix

Annex 2. List of Subprojects

Annex 3. Risk Analysis

Annex 4. Multi Year Work Plan

Annex 5. Quarterly Disbursement April-June 2020

Annex 1

QUARTERLY PROGRESS REPORT 2020¹ Period: April-June 2020

Vulnerable communities in Central Sulawesi and NTB recover from the impact of the 2018 disasters and are more resilient to withstand future shocks			
Output 1: Rehabilitation and reconstruction of partially and fully damaged infrastructure for provision of critical public services			
Output 1 Financial Data	Financial Delivery Amount (Euro) <i>Cumulative expenditures for the current year (Q1-Q4)</i>		Financial Delivery Rate <i>(% expenditures against the annual budget for output)</i>
	Total Project: € 18,929,170.00		Total Project: 17%
Output 1 Indicators	Quarter Progress <i>Provide quantitative results for quarter (not cumulative).</i>	Annual Target³ <i>Update in Q1 of each year using targets agreed in previous Q4 in annual work plan.</i>	Financial Delivery Amount (EURO) <i>Cumulative expenditures for the current year (Q1-Q4)</i>
1.1 # health units reconstructed or rehabilitated using 'build-back better' construction standards 1.2 # educational establishments reconstructed or rehabilitated using 'build-back better' construction standards 1.3 # of service users that benefit from rehabilitated/ reconstructed health facilities (men and women; girls and boys) 1.4 # of school-age children that benefit from reconstructed or rehabilitated educational facilities 1.5 # tonnes of municipal solid waste sustainably disposed of and/or recycled per day, using rehabilitated	1.1 Work in Progress - 14 of 14 (DEDs completed)	1.1 14 of 14 DEDs for health units completed	Euro € 3,124,603.88
	1.2 Work in Progress - 4 of 25 (in DEDs completed)	1.2 4 of 25 DEDs for educational units completed	28%
1.3 # of service users that benefit from rehabilitated/ reconstructed health facilities (men and women; girls and boys)	1.3 <i>Tba – upon completion of reconstructed facilities</i>		
1.4 # of school-age children that benefit from reconstructed or rehabilitated educational facilities	1.4 <i>Tba – upon completion of reconstructed facilities</i>		
1.5 # tonnes of municipal solid waste sustainably disposed of and/or recycled per day, using rehabilitated	1.5 <i>Tba – upon completion of reconstructed facilities</i>		

³ Annual targets refer to the calendar year (rather than project year), and do not depend on when the ProDoc was signed/when the project officially began.

<p>facilities and newly introduced waste management systems</p> <p>1.6 # of cubic metres of earthquake and tsunami debris recycled by municipal public facilities by the end of the project</p>	<p>1.6 <i>Tba – upon completion of reconstructed facilities</i></p>			
Output 1 Activities				
Activity Number	Activity Description	Progress Achieved During Quarter <i>Provide short description of what was undertaken and accomplished</i>	Issues Encountered & Plans to Address Them	Lessons Learned
UNDP Activities				
Activity 1.1	<p>Provide support to the finalization/updating of the Multi-Hazard Risk Assessment and Mapping for Central Sulawesi and Lombok</p>	<p>The Geological investigations in all targeted sites of Output 1 of PETRA project in both provinces West Nusa Tenggara and Central Sulawesi had been officially concluded marked by the submission of final report in April 2020.</p> <p>The findings had also been presented to both local government partners in West Nusa Tenggara province and Central Sulawesi during Q1 2020.</p>		
Activity 1.2	<p>Complete a detailed annual investment plan for local recovery, in close consultation with relevant national and local authorities and local communities</p>	<p>West Nusa Tenggara</p> <p>Selection of target infrastructures is finalized and collectively agreed by IMDFFDR, Provincial and District/ Municipality Government, KfW, and UNDP on 26th March 2019, resulted in 14 priority health and education sub-projects:</p> <ul style="list-style-type: none"> • 1 Primary Healthcare Facility (Puskesmas) in East Lombok district. • 8 Supporting Healthcare Facilities (Pustu) in North Lombok district • 4 Vocational High Schools (SMK) in North Lombok district; • 1 Support Healthcare Facility (Pustu) in West Lombok district 	<p>Corona Virus Disease (COVID-19) in Indonesia has significantly affected PETRA progress. Series of preventive measures have been issued by Gol following WHO standard, namely, stay at home, social distancing, etc. These measures are taken to break the chain of COVID-19 spreads among community. UNDP CO has issued circular letter to all UNDP staffs to working from home, prohibiting official travel, cancel all planned</p>	<p>During Q2 2020, amid social distancing due to COVID-19 crisis that unable project to have direct consultation and coordination with stakeholders, PETRA project applied online platform as alternative ways. From series of online consultation and coordination meeting via zoom application and WhatsApp, few lessons</p>

		<p>Central Sulawesi</p> <p>Selection of target infrastructures is finalized and collectively agreed by IMDFF-DR, Provincial and District/ Municipality Government, KfW, and UNDP on 21st May 2019. By December 2019, 27 target infrastructures of health, education, and sanitation sub-sectors will be reconstructed, as follows:</p> <ul style="list-style-type: none"> • 2 Hospitals (selected buildings, i.e. inpatient room, stroke center, maternal and childcare room, etc) of Anutapura in Palu and Torabelo in Sigi; • 2 Primary Healthcare Facilities (Puskemas) - in Sigi and Donggala; • 2 Vocational High Schools - in Palu and Sigi; • 19 Primary Education school buildings (12 SD and 7 SMP) - in Palu, Sigi, Donggala, and Parigi Moutong • 2 landfills - Kawatuna in Palu and Kabonga in Donggala. 	<p>meeting agenda and suggest for conducting virtual meeting.</p> <p>This situation has undeniably affecting PETRA's workplan. In order to address the problem, PETRA has, firstly, circulating letter about UNDP CO COVID-19 related policies to all stakeholders, partners and networks. Secondly, encourage partners to do risk analysis and its implication on workplan. Thirdly, utilizing online platform such as WhatsApp, skype, and zoom for communication and coordination with partners and stakeholders to ensure the implementation of PETRA project.</p>	<p>learned can be drawn; 1) Factors to consider in developing an online meeting include connectivity, software literacy, interactive set-up; and 2) Technical team to help co-facilitate the meeting. This particularly, considering the diverse of PETRA's stakeholders background in IT literacy, access to internet connection as well as variety of hardware advance.</p>
Activity 1.3	<p>Conduct of tendering processes for (a) Civil works design and supervision (stage one) and (b) Construction (stage two) – using 'Build Back' Better principles</p>	<p>West Nusa Tenggara:</p> <p>Invitation to Bid (ITB) process for Construction of Health and School Facilities in West Nusa Tenggara (Ref No. ITB-UNDP-PETRA-92264-002-2020) began in May, with bid solicitation period started on 11th May to 13th July through UNDP e-tendering system.</p> <p>1st pre-bid conference held on May 19th attended by 28 potential bidders and the 2nd pre-bid conference in June 12, 2020 attended by 11 potential companies. Both pre-bid conferences were conducted online through zoom application.</p>		

		<p>Seven potential bidders that mostly based in Jakarta have carried out site visit between 2nd to 9th of June 2020 in close cooperation with their own local partners in Lombok. Project team in coordination with local government ensured that the COVID-19 preventive measures was applied during the site visit. In addition, video documentation on each targeted site were produced and uploaded into UNDP e-tendering system to provide equal opportunities to potential bidders that unable to conduct site visit.</p> <p>Bid opening conducted on 14th July and continued with bids evaluation which completed on 7th August. The Bid Evaluation Report submitted to UNDP's Advisory Committee on Procurement at New York Headquarters for final review and approval.</p> <p><u>Central Sulawesi:</u></p> <p>The ITB process for Construction of Inpatient Buildings, Pharmacy and Maternity Building in Two Hospitals in Central Sulawesi (Ref No. ITB-UNDP-PETRA-92265-003-2020) began in June, with bid solicitation period started on 3rd June to 13th July.</p> <p>The pre-bid conference was done in 6th June 2020 through zoom, was attended by 12 potential bidders. Video documentation of targeted facilities has been produced as virtual site visit in exchanging to direct site visit to all potential bidders.</p> <p>Bid opening conducted on 14th July and continued with bids evaluation which completed on 28th August. The Bid Evaluation Report submitted to UNDP's Advisory Committee on Procurement at</p>		
--	--	--	--	--

		<p>Regional Office Bangkok for final review and approval.</p> <p>Preliminary design consultation of 21 Schools and 2 Primary Healthcare in Central Sulawesi has been conducted from 9 to 12 June 2020 through zoom application attended by users and relevant stakeholder in Central Sulawesi. Constructive inputs and suggestions were given by users and local government representatives during the consultation meeting. They have also given their commitment to supports the project related to 8 readiness criteria requirements.</p> <p>The DEDs and Tender Document of 21 Schools and 2 Primary Healthcare in Central Sulawesi has been completed and the ITB for construction is planned to be launched by early September 2020.</p> <p>DEDs of Two Landfills and Supporting Facilities in Central Sulawesi has been completed and in the process of preparing documents for tendering process.</p> <p>The ITB process of Construction of Two Landfills and Supporting Facilities in Central Sulawesi (Ref No. ITB-UNDP-PETRA-92267-004-2020) began in mid-August, with bid solicitation period started on 20th August and to be closed by 28th September.</p>		
Activity 1.4	Civil works/Construction: Contract management and supervision			
Activity 1.5	Provision of equipment to accelerate the	By end of March 2020, the restoration of electrical power transformer in Anutapura		

	restoration and enhancement of critical public services, in close coordination with national and local authorities	Hospital Palu had already completed and been fully operational. The work included replacement of 1,000 kVA Power Transformer, Main Distribution Panel, Main Transmission Cabling, and Synchronizing Panel connected to the Hospital's Power Generating Set. It therefore enabled the hospital to operationalize its medical equipment at full capacity, right in the momentum of the hospital was assigned as one of Referral Hospitals for COVID-19 in Central Sulawesi		
Activity 1.6	Provision of formal and on-the-job training to relevant sub-national authorities and community organizations	Upon the completion of 1,000 kVA electrical power supply restoration work, an on-the-job training on operational and maintenance of the Power Transformer, Main Distribution and Synchronizing Panels for the Anutapura Hospital in Palu was conducted for the Hospital's maintenance unit personnel. Further training will be provided to ensure the capacity of project beneficiary is enhanced to effectively use and do proper maintenance of the facilities/ equipment provided by the project.		

Output 2: Rehabilitation of affected communities' economic infrastructure to promote more resilient and sustainable livelihoods			
Output 2 Financial Data	Financial Delivery Amount (Euro) <i>Cumulative expenditures for the current year (Q1-Q4)</i>		Financial Delivery Rate <i>(% expenditures against the annual budget for component)</i>
	Total Project: € 1,390,498.40		Total Project: 34 %
Output 2 Indicators	Quarter Progress <i>Provide quantitative results for quarter (not cumulative).</i>	Annual Target <i>Update in Q1 of each year using targets agreed in previous Q4 in annual work plan.</i>	Financial Delivery Amount (Euro)

			Cumulative expenditures for the current year (Q1-Q4)
2.1 # km of irrigation canals and drainage in disaster-affected areas rehabilitated or reconstructed for improved agriculture 2.2 # of culverts and bridges disaster-affected areas rehabilitated or reconstructed for improved agriculture 2.3 # local markets rehabilitated or reconstructed 2.4 # households that benefit from economic infrastructure rehabilitation (men and women), including direct beneficiaries (self-employed; employees) and indirect beneficiaries (consumers/users) – in retail and agriculture 2.5 # newly created jobs in the waste management and recycling ecosystem (collection, sorting, processing retailing), direct and indirect, men and women	2.1 Work in Progress - (6 irrigation canals had been identified. 3 out of 6 were verified and in the design stage. Remaining 3 are in the verification process. The length of targeted irrigation canals will be determined upon the completion of design)	2.1 tbd upon result of design stage	Euro € 475,537.31
	2.2 Work in Progress – (Two bridges identified. 1 out of 2 verified and in the DED process)	2.2 tbd upon result of design stage	Financial Delivery Rate (% expenditures against the annual budget for outcome) 92%
	2.3 Work in Progress – (Three local markets verified and in the DED process)	2.3 tbd upon result of design stage	
	2.4 tba – (upon completion of community infrastructures)	2.4 tbd upon result of design stage	
	2.5 Being assessed on relevance with current situation (revision will be formalized in Project document revision)		

Output 2 Activities

Activity Number	Activity Description	Progress Achieved During Quarter <i>Provide short description of what was undertaken and accomplished</i>	Issues Encountered & Plans to Address Them	Lessons Learned
UNDP Activities				
Activity 2.1	Facilitate community-led processes for the identification and prioritization of critical local economic assets	West Nusa Tenggara In the previous quarter, there were 3 out of 8 proposed had been verified by the IMDFF-DR secretariat. 5 remaining community infrastructures targets were in waiting list to	On-site verification for other 6 proposed community infrastructures is probably unable to be conducted in Q2 2020 due to COVID-19 pandemic. This situation may lead to the delay of	The challenge for project implementation during Q2 2020 due to COVID-19 outbreak was undeniably out of the expectation. However, it was also

	<p>(infrastructure) to be recovered</p>	<p>be verified. The delay was due to the COVID-19 situation that restricted the secretariat to conduct field verification. In order to address the challenge, during 2nd quarter, project team has prepared supporting documents that fulfil 8 readiness criteria and produced video documentation of 5 remaining sites as an alternative field verification. The supporting documents for verification have been sent to the IMDFF-DR secretariat along with confirmation letter from local government of East Lombok district in June 2020 for final verification and approval.</p> <p>Until the end of Q2 2020, the targeted community infrastructures to be reconstructed in both North Lombok and East Lombok district of West Nusa Tenggara are:</p> <ol style="list-style-type: none"> 1) Clean water installation Birisan Nangka, Sambik Elen village - North Lombok 2) Village Market Genggelang, Genggelang village – North Lombok 3) Irrigation canal Orong Sempade, Sajang village – East Lombok <p>The remaining 5 (five) community infrastructures that are going to be verified by the IMDFF-DR secretariat are:</p> <ol style="list-style-type: none"> 1) Irrigation canal Bawak Nao Daya, Sajang village - East Lombok 2) Farmer’s bridge Belunak, Sembalun Lawang village – East Lombok 3) Water retention basin Rante Mas, Sembalun Lawang village – East lombok 	<p>implementation of CSOs partners in the field.</p> <p>PETRA UNDP has informed the IMDFF-DR secretariat during virtual meeting in the end of March 2020.</p> <p>Team will follow up by setting site verification through online platform.</p>	<p>providing opportunity for Project team and partners on the ground to become innovative. During Q2, PETRA project has taken some serious measures to ensure the project implementation keep running, namely, encourage and facilitating CSO partners to reschedule activities, adjusting soft skills component based on current context.</p> <p>Series of video documentation of remaining targets have been produced as alternative solution for the IMDFF-DR secretariat conducting field verification. The production of these video documentation was supervision of Project team to ensure the content match with the key aspects of field verification as if it is conduct directly.</p>
--	---	--	--	--

		<p>4) Water retention basin Nap-nap, Sembalun Bumbung village – East Lombok</p> <p>5) Irrigation canal Dayan Ruruk Timuk, Sembalun Bumbung village- East Lombok.</p> <p>The verification process for those 5 remaining targets is expected to be completed by mid of Q3.</p> <p><u>Central Sulawesi</u></p> <p>5 out of 10 potential community infrastructures in Central Sulawesi were verified by the IMDFF-DR secretariat in the previous quarter. Those are:</p> <ol style="list-style-type: none"> 1) Suspensions bridge in Tuva village - Sigi District. 2) Irrigation canal in Tuva village - Sigi District. 3) Omu community market in Omu Village - Sigi District. 4) Irrigation canal in Jono village - Sigi district. 5) Sibado community market in Sibado village – Donggala district. <p>The Sibado community market was one of targeted infrastructure of Output 1, however due to its function, level of asset’s management level; and based upon agreement with Donggala District Government and communication with the IMDFF-DR secretariat, it shifted into Output 2’s target.</p>		
--	--	--	--	--

		<p>An alternative approach has been taken to overcome travel restrictions due COVID-19 crisis for verification of 5 remaining community infrastructures in Central Sulawesi. Supporting documents such as confirmation letter from local government of Sigi and Donggala, geological survey results, as well as production of video documentation as virtual verification have been delivered.</p> <p>To strategically engage the ownership of Local government in Sigi District toward the reconstruction of bridge in Tuva village, UNDP PETRA sought for recommended consultant from Sigi District Office of Public Work and Housing (Dinas Pekerjaan Umum dan Perumahan Kabupaten Sigi) to supervise and monitor quality of the construction process. Head of Bina Marga for Sigi District Office of Public Works and Housing, through an official letter has recommended 2 (two) certified supervisors to be deployed in the project.</p>		
Activity 2.2	Conduction of tendering processes for the rehabilitation of prioritized community (economic) infrastructure	<p><u>West Nusa Tenggara</u></p> <p>By end of Q2 2020, PETRA's CSO Partner Paluma in North Lombok have nearly reached the end of design phase of two community infrastructures:</p> <ol style="list-style-type: none"> 1) Clean water installation Birisan Nangka, Sambik Elen village - North Lombok; and 2) Village Market Genggelang, Genggelang village – North Lombok. <p>During Q2, series of consultation have been conducted with beneficiaries and local government of both villages. The design The DED and BoQ of those two targets are in</p>		

		<p>process of final review by PETRA Resident Engineer.</p> <p>In the period of Q3 – July to August 2020, construction works in the two locations in the above have been commenced.</p> <p>The other PETRA’s CSO Partner, Wahana Visi Indonesia in East Lombok is in process of finalizing DED of the Irrigation canal Orong Sempade in Sajang village.</p> <p><u>Central Sulawesi</u></p> <p>Beside continuing implementing DRR capacity strengthening of community members in Tuva village, PETRA’s CSO partner in Sigi district, YKMI is in the process of finalizing DED for reconstruction Tuva suspensions bridge as well as preparation for recruitment community members for cash for works. It is estimated that the construction works will be started by the end of next quarter.</p> <p>The UNDP has issued solicitation of RFP for design and supervision of two community markets - Omu and Sibado markets on 26th June to 27th July 2020. Following proposal evaluation, it was found that prices offered by potential Contractors are far beyond planned budget. This is quite sensible as the most potential bidders are Java-based and there was no potential bidder qualified from local Central Sulawesi. Having assessed the value-for-money considerations, it was decided to call off the RFP and to determine other modality that will resulted in more efficient cost for the design works.</p>		
--	--	--	--	--

		In preparation for construction works, UNDP and its CSO partners in both provinces have developed Cash for Works guideline that integrated with COVID-19 protocol, gender and disability issues. This guideline will be used as measures to ensure the safety and health of community members who participated as CfW workers during the construction works.		
Activity 2.3	Civil works/Construction: Contract management and supervision	Some of Civil works/ reconstruction which part of the 3 CSOs' scope of work has begun by end of July 2020. The civil work for 2 marketplaces is expected to commence in early next year.		
Activity 2.4	Implementation of small scale, cash-for-work schemes through NGOs/CSOs – debris removal and debris management	Despite of COVID-19 crisis and remaining verification targets of Output 2. The three CSOs PETRA partners (<i>Perkumpulan Paluma Nusantara</i> for North Lombok and <i>Yayasan Wahana Visi Indonesia</i> for East Lombok in West Nusa Tenggara and <i>Yayasan Kemanusiaan Muslim Indonesia</i> to work in Sigi district-Central Sulawesi) have continued their works on the verified community infrastructures by applying COVID-19 prevention protocols. During 2 nd quarter, both CSO partners - Paluma and WVI – have been implemented series of soft component activities that aimed to increase community members capacity, namely, training on DRR related issues and livelihood skills. For example, in Genggelang village- North Lombok, Paluma trained and facilitated community members in producing fabric mask. The mask was following the standard of WHO mask for COVID-19 preventive measures. 283 dozen		

		<p>of masks had been produced by community and bought by North Lombok COVID-19 Task Force with IDR 50,000 per dozen to support the community livelihood. Moreover, both Paluma and WVI have also encouraged village DRR volunteer that established in the Q1 to actively engage in fighting COVID-19 through raising awareness campaign such as hand washing, wearing mask and social distancing. At some point, this reflected how implementation of PETRA activities were also taking into account COVID-19 response and preventive measures.</p>		
Activity 2.5	Design and piloting of a recycling and sorting facility, with the engagement of local authorities and communities	<i>Being assessed on relevance with current situation (revision will be formalized in Project document revision)</i>		

Annex 2

LIST OF SUBPROJECTS

Design and Supervision Consultancy Works of Output 1 Subprojects

No	Design and Supervision Contract ID	Description	Design and Supervision Consultant	Contract Value (IDR)	Contract Value (EUR)	Progress Status			
						Assessment	Concept design	Detail Engineering Design (DED)	Supervision
1	PS/2019/0000000680	Design and supervision of reconstruction of facilities at two hospital (Anutapura and Tora Belo hospital) in Central Sulawesi	PT Arkonin Engineering Manggala Pratama	6,053,000,000	356,058.82	Completed	Completed	Completed	Not yet started
2	PS/2019/0000000654	Design and supervision of 14 subprojects in West Nusa Tenggara: 1 Primary Healthcare Facility (Puskesmas) in East Lombok district; 8 Supporting Healthcare Facilities (Pustu) in North Lombok district and; 4 Vocational High Schools (SMK) in North Lombok district	Arkonin - Dacrea JV	7,078,554,000	416,385.53	Completed	Completed	Completed	Not yet started
3	PS/2019/0000000812	Design and supervision for Reconstruction of Primary Health Care and 21 Schools in Central Sulawesi: 2 Primary Healthcare Facilities (Puskesmas) - in Sigi and Donggala; 2 Vocational High Schools - in Palu and Sigi and; 19 Primary Education school buildings (12 SD/Elementary and 7 SMP/Junior High) - in Palu, Sigi, Donggala and Parigi Moutong	PT. Yodya Karya (Persero) JV PT. Bumi Harmoni Indoguna and PT. Cakrabuana Consultants	15,162,870,000	891,933.53	Completed	Completed	Completed	Not yet started
4	PS/2019/0000000801	Design and supervision of reconstruction of 2 Landfills in Central Sulawesi: Kawatuna landfill in Palu and Kabonga landfill in Donggala.	PT Arkonin Engineering Manggala Pratama JV PT Indokoei International	9,895,350,000	582,079.41	Completed	Completed	Completed	Not yet started

Subprojects Output 1 - Reconstruction of basic public service infrastructures

No	Sector	Sub Project	Location		Description	Contractor	Subproject Cost (IDR) ⁴	Subproject Cost (EUR)	Progress Status	
			Province	District					Design	Construction work ⁵
1	Health	Anutapura Hospital: Murai Inpatient Building (Stroke Center) + Corridor, Pharmacy Building and Transformer (with Distribution Panel and Cable Network)	Central Sulawesi	Palu	- Reconstruction of two storage building, consist of Murai inpatient building (ground floor) and Stroke Center (first floor), - Reconstruction of two storage Pharmacy building, and - Restoration of Transformer, distribution panel, power network & installation of the entire hospital area	TBD	18,209,250,000	1,071,132.35	Completed	Bid evaluation
2	Health	Tora Belo Hospital: Paediatric / Post Surgery Inpatient Building (Pinus/Ebony) and Maternity Building (Meranti)	Central Sulawesi	Sigi	- Reconstruction of two storage Inpatient building, consist of Pinus room (ground floor), and Ebony room (first floor), complete with Slope way to Ebony room, - Reconstruction of Maternity Building (Meranti room)	TBD	10,153,000,000	597,235.29	Completed	Bid evaluation
3	Health	Puskesmas Kulawi	Central Sulawesi	Sigi	Reconstruction of the main building of the Puskesmas (sub-district medical center), including 1 unit of toilets	TBD	3,549,000,000	208,764.71	Completed	ITB/ Bid solicitation
4	Health	Puskesmas Malei	Central Sulawesi	Donggala	Reconstruction of the inpatient building, including 1 unit of toilets and perimeter fence	TBD	1,881,000,000	110,647.06	Completed	ITB/ Bid solicitation
5	Health	Puskemas Pembantu (Pustu) Tegal Maja Tanjung	West Nusa Tenggara	Lombok Utara	Reconstruction of Main Building	TBD	598,200,000	35,188.24	Completed	Bid evaluation
6	Health	Pustu Gangga	West Nusa Tenggara	Lombok Utara	Reconstruction of Main Building	TBD	598,200,000	35,188.24	Completed	Bid evaluation
7	Health	Pustu Rangsot Sigar Pejalin	West Nusa Tenggara	Lombok Utara	Reconstruction of Main Building	TBD	598,200,000	35,188.24	Completed	Bid evaluation
8	Health	Pustu Telaga Wareng Pemenang	West Nusa Tenggara	Lombok Utara	Reconstruction of Main Building	TBD	598,200,000	35,188.24	Completed	Bid evaluation
9	Health	Pustu Pendua Kayangan	West Nusa Tenggara	Lombok Utara	Reconstruction of Main Building	TBD	598,200,000	35,188.24	Completed	Bid evaluation

⁴ Initial Cost Estimates concluded in Q3 2019, based upon figures stated in the GoI's Rehabilitation and Reconstruction Plans and upon technical assessment conducted by PETRA Engineers.

⁵ Status reflecting progress as per August 2020.

No	Sector	Sub Project	Location		Description	Contractor	Subproject Cost (IDR) ⁴	Subproject Cost (EUR)	Progress Status	
			Province	District					Design	Construction work ⁵
10	Health	Pustu Selengen Kayangan	West Nusa Tenggara	Lombok Utara	Reconstruction of Main Building	TBD	598,200,000	35,188.24	Completed	Bid evaluation
11	Health	Pustu Sesait Kayangan	West Nusa Tenggara	Lombok Utara	Reconstruction of Main Building	TBD	598,200,000	35,188.24	Completed	Bid evaluation
12	Health	Pustu Loloan Bayan	West Nusa Tenggara	Lombok Utara	Reconstruction of Main Building	TBD	598,200,000	35,188.24	Completed	Bid evaluation
13	Health	Puskesmas Labuhan Lombok	West Nusa Tenggara	Lombok Timur	Relocated, Reconstruction of Main Building	TBD	4,399,897,480	258,817.50	Completed	Bid evaluation
14	Health	Pustu Gapuk	West Nusa Tenggara	Lombok Barat	Reconstruction of Main Building	TBD	580,000,000	34,117.65	Completed	Bid evaluation
15	Infrastructure -Sanitation (landfill)	Kawatuna Landfill	Central Sulawesi	Palu	Reconstruction of Leachate Treatment Plant, Rehabilitation of Leachate Collection System; Reshaping, capping & closure of cell-2; Construction of Cell-3; Landfill Gas Collection System; Road and Drainage; Perimeter Fence and Buffer Zone; Landfill Office; Mechanical Workshop; and Material Recovery Facility	TBD	34,551,420,000	2,032,436.47	Completed	ITB/ Bid solicitation
16	Infrastructure -Sanitation (landfill)	Kabonga Landfill	Central Sulawesi	Donggala	Rehabilitation of Leachate collection system, Reshaping/capping of existing cell, - Construction of cell-2, Landfill Gas collection system; Road and Drainage; Perimeter Fence and Buffer Zone; Construction of Leachate Treatment Plant; and Material Recovery Facility	TBD	13,792,500,000	811,323.53	Completed	ITB/ Bid solicitation
17	Social - Education (School facilities)	SD Negeri 21 Palu	Central Sulawesi	Palu	Reconstruction of the whole six classrooms, the teacher's room/office, Library, - Prayer room, Two units of toilets, and Perimeter fence, with high wall fence on the front	TBD	3,752,440,000	220,731.76	Completed	Finalizing tender documents
18	Social - Education (School facilities)	SD Negeri Pengawu	Central Sulawesi	Palu	Reconstruction of ten classrooms, Prayer room, Three units of toilets, and Perimeter fence around the school.	TBD	5,546,980,000	326,292.94	Completed	Finalizing tender documents
19	Social - Education	SMP Negeri 14 Palu	Central Sulawesi	Palu	Reconstruction of sixteen classrooms, Extracurricular room (UKS), Four units of toilets, and Perimeter fence.	TBD	9,229,680,000	542,922.35	Completed	Finalizing tender documents

No	Sector	Sub Project	Location		Description	Contractor	Subproject Cost (IDR) ⁴	Subproject Cost (EUR)	Progress Status	
			Province	District					Design	Construction work ⁵
	(School facilities)									
20	Social - Education (School facilities)	SD Inpres Jono Oge	Central Sulawesi	Sigi	- Reconstruction of twelve classrooms, - Teacher's room / office, - Library, - Prayer room, - Three units of teacher's house, - Three units of toilets, and - Perimeter fence.	TBD	7,004,880,000	412,051.76	Completed	Finalizing tender documents
21	Social - Education (School facilities)	SD Negeri Bulupontu Jaya	Central Sulawesi	Sigi	- Reconstruction of three classrooms, - Teacher's room / office, - Library, - Three units of teacher's house, - Two units of toilets, and - Perimeter fence.	TBD	3,055,400,000	179,729.41	Completed	Finalizing tender documents
22	Social - Education (School facilities)	SD Negeri Lompio	Central Sulawesi	Sigi	- Reconstruction of six classrooms, - Teacher's room / office, - Library, - Two units of teacher's house, - Two units of toilets, and - Perimeter fence.	TBD	3,874,720,000	227,924.71	Completed	Finalizing tender documents
23	Social - Education (School facilities)	SD Negeri 1 Boladangko	Central Sulawesi	Sigi	- Reconstruction of six classrooms, - Teacher's room / office, - Library, - One unit of teacher's house, - One unit of toilets, and - Perimeter fence.	TBD	3,119,560,000	183,503.53	Completed	Finalizing tender documents
24	Social - Education (School facilities)	SD Negeri 2 Gimpu	Central Sulawesi	Sigi	- Reconstruction of six classrooms, - Teacher's room / office, - Library, - One unit of teacher's house, and - One unit of toilets	TBD	2,990,560,000	175,915.29	Completed	Finalizing tender documents

No	Sector	Sub Project	Location		Description	Contractor	Subproject Cost (IDR) ⁴	Subproject Cost (EUR)	Progress Status	
			Province	District					Design	Construction work ⁵
25	Social - Education (School facilities)	SMP Negeri 3 Sigi	Central Sulawesi	Sigi	- Reconstruction of thirteen classrooms, - Library, - Science laboratory, - Prayer room, - Two units of toilets, and - Perimeter fence	TBD	8,557,320,000	503,371.76	Completed	Finalizing tender documents
26	Social - Education (School facilities)	SMP Negeri 3 Sirenja	Central Sulawesi	Donggala	- Reconstruction of six classrooms, - Teacher's room/office, - Library, - One unit of toilets, and - Perimeter fence	TBD	3,219,120,000	189,360.00	Completed	Finalizing tender documents
27	Social - Education (School facilities)	SMP Negeri 1 Labuan	Central Sulawesi	Donggala	Reconstruction of three classrooms	TBD	1,826,380,000	107,434.12	Completed	Finalizing tender documents
28	Social - Education (School facilities)	SMP Negeri Satap 3 Sindue Tobata	Central Sulawesi	Donggala	- Reconstruction of six classrooms, - Teacher's room/office, - Science laboratory, - Two units of toilets, and - Perimeter fence	TBD	6,114,840,000	359,696.47	Completed	Finalizing tender documents
29	Social - Education (School facilities)	SD Negeri 3 Kasimbar	Central Sulawesi	Parigi Moutong	- Reconstruction of six classrooms, - Teacher's room/office, and - One unit of toilets	TBD	1,984,520,000	116,736.47	Completed	Finalizing tender documents
30	Social - Education (School facilities)	SD Inpres Marantale	Central Sulawesi	Parigi Moutong	- Reconstruction of three classrooms, - Teacher's room/office, and - One unit of toilets	TBD	1,637,540,000	96,325.88	Completed	Finalizing tender documents
31	Social - Education (School facilities)	SD Negeri Toboli	Central Sulawesi	Parigi Moutong	- Reconstruction of three classrooms, - Teacher's room/office, and - One unit of toilets	TBD	1,625,040,000	95,590.59	Completed	Finalizing tender documents
32	Social - Education (School facilities)	SD Negeri Parigimpuu	Central Sulawesi	Parigi Moutong	- Reconstruction of two classrooms, - One unit of toilets	TBD	862,920,000	50,760.00	Completed	Finalizing tender documents

No	Sector	Sub Project	Location		Description	Contractor	Subproject Cost (IDR) ⁴	Subproject Cost (EUR)	Progress Status	
			Province	District					Design	Construction work ⁵
33	Social - Education (School facilities)	SD Negeri Purwosari	Central Sulawesi	Parigi Moutong	- Reconstruction of seven classrooms, - Teacher's room/office, and - Two units of toilets	TBD	3,348,380,000	196,963.53	Completed	Finalizing tender documents
34	Social - Education (School facilities)	SMP Negeri 2 Satap Parigi Selatan	Central Sulawesi	Parigi Moutong	- Reconstruction of Extra-curricular room, - Library, and - One unit of toilets	TBD	803,840,000	47,284.71	Completed	Finalizing tender documents
35	Social - Education (School facilities)	SMP Negeri 1 Parigi Utara	Central Sulawesi	Parigi Moutong	- Reconstruction of eight classrooms, - Library, - Science laboratory, and - Two units of toilets	TBD	5,480,460,000	322,380.00	Completed	Finalizing tender documents
36	Social - Education (School facilities)	SMK Negeri 8 Palu	Central Sulawesi	Palu	- Reconstruction of twelve classrooms, - Teacher's room/office, - Prayer room, and - Two units of toilets	TBD	8,029,320,000	472,312.94	Completed	Finalizing tender documents
37	Social - Education (School facilities)	SMK Negeri 1 Sigi	Central Sulawesi	Sigi	- Reconstruction of twenty eight classrooms, - The main Hall, - Practice room, - Mechanical workshop, - Warehouse, - Science laboratory, - Library, - Computer laboratory, - Languages laboratory, - Network laboratory, - Prayer room, - Six units of Toilets, - Corridor on each room, and - Perimeter Fence	TBD	31,116,670,000	1,830,392.35	Completed	Finalizing tender documents

No	Sector	Sub Project	Location		Description	Contractor	Subproject Cost (IDR) ⁴	Subproject Cost (EUR)	Progress Status	
			Province	District					Design	Construction work ⁵
38	Social - Education (School facilities)	SMKN 1 Pemenang	West Nusa Tenggara	Lombok Utara	Reconstruction of: - 2 classrooms - 2 Laboratory - 1 Library - 4 Student Practice Room - 1 Administration Office - 1 Prayer room - Perimeter fence	TBD	13,055,859,900	767,991.76	Completed	Bid Evaluation
39	Social - Education (School facilities)	SMKN 1 Tanjung	West Nusa Tenggara	Lombok Utara	Reconstruction of: - 3 classrooms - 1 Headmaster office - 2 Laboratory - 5 Student Practice Room - 1 Library - 1 storage room - Perimeter fence	TBD	20,742,457,400	1,220,144.55	Completed	Bid Evaluation
40	Social - Education (School facilities)	SMKN 1 Gangga	West Nusa Tenggara	Lombok Utara	Reconstruction of: - 1 classrooms - 1 Administration office - 3 Student Practice Room - Perimeter fence	TBD	9,378,278,100	551,663.42	Completed	Bid Evaluation
41	Social - Education (School facilities)	SMKN 1 Kayangan	West Nusa Tenggara	Lombok Utara	Reconstruction of: - 2 classrooms - 1 Student Practice Room - 1 Laboratory - 1 Teacher Toilet - 1 Praying room - Perimeter fence	TBD	5,009,591,000	294,681.82	Completed	Bid Evaluation

Low Value Grants⁶ to selected CSOs for Output 2 subprojects

No	Low Value Grant Agreement (LVGA) ID	Description	CSO	Agreement Value (IDR)*	Agreement Value (EUR)
1	002/X/2019/PETRA	Responsible for: the reconstruction of infrastructure and community based sustainable livelihood project model; Strengthening disaster risk reduction and recovery local initiatives; Capacity building and community empowerment for sustainable and resilient livelihood recovery; and reconstruction of Economic and Livelihood Village Infrastructure in Lombok Utara- West Nusa Tenggara province.	Perkumpulan Paluma Nusantara (Paluma)	2,024,750,000	119,102.94
2	001/X/UNDP/PETRA	Responsible for: the reconstruction of infrastructure and community based sustainable livelihood project model; Strengthening disaster risk reduction and recovery local initiatives; Capacity building and community empowerment for sustainable and resilient livelihood recovery; and reconstruction of Economic and Livelihood Village Infrastructure in Lombok Timur- West Nusa Tenggara province.	Wahana Visi Indonesia (WVI)	2,099,986,000	123,528.59
3	003/X/2019/PETRA	Responsible for: the reconstruction of infrastructure and community based sustainable livelihood project model; strengthening DRR and Recovery local initiatives; capacity building and community empowerment for sustainable and resilient livelihood recovery; and reconstruction of Economic and Livelihood Village Infrastructure in Tuva village of Sigi- Central Sulawesi province	Yayasan Kemanusiaan Muslim Indonesia (YKMI)	2,080,252,600	122,367.80

⁶ UNDP's Definition of Low Value Grants: LVG are cash awards – selected via programmatic decisions – to civil society and non-governmental partners to generate and solicit development solutions for which no repayment is typically required.

Subprojects Output 2 - Rehabilitation/ Reconstruction of community infrastructures supporting livelihood and economic recovery

No	Sector	Sub Project	Location			Description	Implementor	Subproject Cost (IDR) ⁷	Subproject Cost (EUR)	Progress Status ⁸	
			Province	District	Village					Design	Construction works
1	Socio economic	Tuva Suspensions Bridge	Central Sulawesi	Sigi	Tuva	1 unit of suspensions bridge, W=1.8 m; L=74 m; main access to 200 Ha farm fields of Tuva people.	Yayasan Kemanusiaan Muslim Indonesia (YKMI)	1,491,639,800	87,743.52	Completed	Started in August
2	Socio economic	Tuva Irrigation canal	Central Sulawesi	Sigi	Tuva	100 meters of concrete canal for 5 ha farm fields	TBD	1,000,000,000	58,823.53	Preparation of RFP	Not yet started
3	Socio economic	Omu Local Market	Central Sulawesi	Sigi	Omu	Reconstruction of 3-unit local market hall, approx. 550 sqm.	TBD	2,049,200,000	120,541.18	Re-tendering Design Consultant Services	Not yet started
4	Socio economic	Sibado Local Market	Central Sulawesi	Donggala	Sibado	Reconstruction of 2-unit local market hall, approx. 415 sqm.	TBD	1,570,850,000	92,402.94	Re-tendering Design Consultant Services	Not yet started
5	Socio economic	Waserda Genggelang local market	West Nusa Tenggara	Lombok Utara	Genggelang	Reconstruction of 1 block of community kiosks, approx. 144 sqm.	Paluma Nusantara	455,000,000	26,764.71	Completed	Started in July
6	Socio economic	Clean water distribution reinstallation Birisan Nangka	West Nusa Tenggara	Lombok Utara	Sambik Elen	Reinstallation of approx. 2000 m of clean water pipe	Paluma Nusantara	305,400,000	17,964.71	Completed	Started in August
7	Socio economic	Irrigation canal Orong Sempade	West Nusa Tenggara	Lombok Timur	Sajang	Reconstruction of 150-meter stone masonry irrigation canal for 50 ha farm fields	Wahana Visi Indonesia (WVI)	112,378,000	6,610.47	Ongoing	Not yet started
8	Socio economic	Irrigation canal Bawak Nao Daya	West Nusa Tenggara	Lombok Timur	Sajang	Reconstruction of 100-meter stone masonry irrigation canal for 30 Ha of farm fields	Wahana Visi Indonesia (WVI)	175,426,000	10,319.18	Ongoing	Not yet started
9	Socio economic	Farmer's bridge Belunak	West Nusa Tenggara	Lombok Timur	Sembanun Lawang	Reconstruction of 5x3 meter concrete bridge	Wahana Visi Indonesia (WVI)	88,056,000	5,179.76	Ongoing	Not yet started
10	Socio economic	Water retention basin Rante Mas	West Nusa Tenggara	Lombok Timur	Sembanun Lawang	Rehabilitation of 100 sqm water basin for 7 Ha rice fields	Wahana Visi Indonesia (WVI)	182,403,000	10,729.59	Ongoing	Not yet started

⁷ Cost estimates produced by Engineers of both PETRA and its CSO Partners.

⁸ Status reflecting progress as per August 2020.

No	Sector	Sub Project	Location			Description	Implementor	Subproject Cost (IDR) ⁷	Subproject Cost (EUR)	Progress Status ⁸	
			Province	District	Village					Design	Construction works
11	Socio economic	Water retention basin Nap-nap	West Nusa Tenggara	Lombok Timur	Semalun Bumbung	Rehabilitation of 121 sqm water basin for 50 ha rice fields	Wahana Visi Indonesia (WVI)	341,661,000	20,097.71	Ongoing	Not yet started
12	Socio economic	Irrigation canal Dayan Ruruk Timuk	West Nusa Tenggara	Lombok Timur	Semalun Bumbung	Reconstruction of 120-meter pipe irrigation canal for 400 ha farm fields	Wahana Visi Indonesia (WVI)	293,223,000	17,248.41	Ongoing	Not yet started

Annex 3

RISK ANALYSIS

Project Title: Sulawesi/Lombok Programme for Earthquake and Tsunami Infrastructure Reconstruction Assistance	Award ID: 00116311	Date: 30 June 2020
---	---------------------------	---------------------------

#	Description	Date Identified	Type	Impact & Probability	Countermeasures / Management response	Owner	Submitted, updated by	Last Update	Status
1	Potential environmental risks, especially with the waste management aspects of the project.	18/ 12/ 2018	Environmental	<p>Damage to the environment for example the aquifer if the leachate from the waste management facility was not treated appropriately.</p> <p>P = 3 L = 2</p>	<p>Environmental and Social Management Framework to identify and plan for potential risks. Each subproject will have its own environmental and social risk management plan.</p> <p>ESMF integrated into RFPs/ ITBs of design, construction, and supervision.</p> <p>Collaboration with Geological Agency has included Kawatuna and Kabonga landfills as part of geological test and investigation.</p> <p>Environmental and Social Management Plan produced for West Nusa Tenggara subprojects and incorporated in construction tender document.</p>	Project Manager	Project Manager	30/ 03/ 2020	<p>No change</p> <p><i>(as relevant tasks not yet started)</i></p>

#	Description	Date Identified	Type	Impact & Probability	Countermeasures / Management response	Owner	Submitted, updated by	Last Update	Status
2	Occupational health and safety due to physical, chemical, biological, and radiological hazards during Project construction, operation, or decommissioning?	18/ 12/ 2018	Environmental	Contaminants during demolition, construction P = 3 I = 3	<p>Environmental and Social Management Framework to identify and plan for potential risks. Each subproject will have its own environmental and social risk management plan.</p> <p>ESMF integrated into RFPs/ ITBs of design, construction, and supervision.</p> <p>Identified chemical hazard from building materials in the Project sites in Lombok, i.e. asbestos, had been taken up into detail discussion in order to plan for safe site clearance prior to construction. UNDP has engaged a Technical Advisor on Asbestos to conduct site assessment, develop guidelines for safe disposal of asbestos, and monitor the processes on safe disposal of asbestos.</p> <p>Adopting GoI standard policy on Preventive Measures in Construction Works.</p>	Project Manager	Project Manager	30/ 03/ 2020	Increasing COVID-19 pandemic may likely affect the construction works, and health risk may prolong until end of 2020.

#	Description	Date Identified	Type	Impact & Probability	Countermeasures / Management response	Owner	Submitted, updated by	Last Update	Status
3	National and sub-national stakeholders do not support PETRA's objectives and are not willing to cooperate.	18/ 12/ 2018	Political	Project would not be able to identify and restore damaged infrastructure. P = 1 I = 1	Maintain active consultation with the government at all stages of the programme. seek approval from government on the proposed infrastructure. Develop a consultation and monitoring framework with Government stakeholder for the design and construction work of infrastructure sub-projects	RRU Team Leader Project Manager	Project Manager	30/ 03/ 2020	Completed Following the signing of PETRA Prodoc in May, series of consultation and coordination meetings at national and local levels have resulted in positive responses and acceptance towards the Project and investment plan.
4	Qualified construction companies are not (a) available in the market, (b) interested to engage in the implementation of the various components of the civil works/ contracts, and willing to take part in competitive selection process, and (c) are able to provide the required design, construction and supervision services as per required standards, including the required	18/ 12/ 2018	Operational	Poorly constructed infrastructure will place communities at risk Construction Tender process will yield in minimum participation of potential bidders P = 3 I = 2	Asking potential companies to submit EOI. Ensure tenders are widely advertised. Prepare detailed RFQs/ ITBs RFQs/ ITBs are packaged in accordance with Gol's standard classification of construction companies' financial capacity.	Project Manager	Project Manager	30/ 03/ 2020	Increasing COVID-19 pandemic may likely affect the construction tender process in terms of conducting site visit directly. The project anticipating workable measures to have all




#	Description	Date Identified	Type	Impact & Probability	Countermeasures / Management response	Owner	Submitted, updated by	Last Update	Status
	social, environmental and safety standards.				Re-strategizing construction tender subprocess Adopting Gol standard policy on Preventive Measures in Construction Works.				necessary information and coordination virtually.
5	Eligible CSOs/NGOs are not able to mobilize communities to support project implementation, including the rehabilitation of community economic infrastructure, and are willing to receive and adhere to UNDP's advice with regards to required social, environmental and safety standards.	18/ 12/ 2018	Operational	NGOs are not able to engage with the community, or do not have appropriate experience. Inability of implementing community-based work due to COVID-19 pandemic. P = 3 I = 2	Select local NGOs that already have community networks in Palu and Lombok. Establish, review and update NGO/ CSO roster. Maintain relationship with NGO previously worked with UNDP through informal discussion and learning forum. Keep abreast of activities and/or event managed by potential NGOs/ CSOs, to indirectly monitor their capacities and performance. Adopting Gol standard policies on COVID-19 Preventive Measures in Construction Works issued by MOPW, and similar COVID-19 preventive measures	Project Manager	Project Manager	30/ 03/ 2020	Increasing COVID-19 pandemic limits human physical interactions, and therefore will affect on community engagement.

#	Description	Date Identified	Type	Impact & Probability	Countermeasures / Management response	Owner	Submitted, updated by	Last Update	Status
					policy in conducting Village-based Cash for Work issued by MoV by end of March.				
6	Local communities will not engage with the project and develop a sense of ownership for project results, including rehabilitated/reconstructed local community infrastructure.	18/12/2018	Operational	Community Infrastructure not operated or maintained P = 2 I = 1	Community mobilizer involves communities at all stages of the project cycle. Engagement with communities and local government started before assignment of Implementing Partners to sense on their acceptance towards the Project's scope of intervention.	Project Manager	Project Manager	30/ 03/ 2020	Reducing Results and experiences from series of consultations with target communities and local government have been positive, which increase the likelihood of community's engagement towards project results.
7	COVID-19 pandemic may likely affect PETRA project implementation progress.	16/03/2020	Operational	Health risk to project personnel, beneficiaries and other involved stakeholders P = 2 I = 2	Set up protocol for safety, especially activities that required physical contact. Optimizing online platform as media for coordination and communication. Revisiting workplan and target.	Project Manager	Project Manager	30 / 06 / 2020	Reducing UNDP COVID-19 protocol and preventive measures are in place. Online platforms are utilized, i.e. zoom, WhatsApp and skype.

#	Description	Date Identified	Type	Impact & Probability	Countermeasures / Management response	Owner	Submitted, updated by	Last Update	Status

PROJECT COMPONENT	PLANNED ACTIVITIES	TIME SCHEDULE													
		2019				2020				2021				2022	
		Q1	Q2	Q3	Q4	Q1	Q2	Q3	Q4	Q1	Q2	Q3	Q4	Q1	Q2
	2.3. Civil works/Construction: Contract management and supervision							LS							
	2.4. Implementation of small scale, cash-for-work schemes through NGOs/CSOs – debris removal and debris management							LS							
	2.5. Design and piloting of a recycling and sorting facility , with the engagement of local authorities and communities														
	MONITORING														
CROSS-CUTTING	3.1. Set up of Project Management Unit	Completed													
	3.2. Project Advisory Committee: Scheduled Meetings	*		*		*		*		*		*			
	3.3. Project audits				**				**				**		
	3.4. Evaluation and Final Project Report/ Completion Report														

NOTE:

- * Scheduled as two-hour meetings
- ** Tentative schedule. The actual frequency and timing of Project audits will be determined by UNDP’s Office of Audit and Investigations (OAI).
- ES Early Start (actual)
- LS Late Start (forecast)
- LF Late Finish (forecast)
-  Initial Planned Timeline
-  Updated Planned Timeline
-  Actual Timeline

Annex 5

QUARTERLY DISBURSEMENT 2020* figures in EURO

Outputs	Activities	Fund Source	Budget (EURO)	Disbursement	Balance
				Q2 2020	
Output 1: Repair and reconstruction of partially and fully damaged infrastructure for the restoration of critical public service	1.1. Consultancies and technical advisory services	KfW	113,750.00	86,683.58	27,066.42
	1.2 Civil works: Design, Construction and Technical Supervision	KfW	16,740,000.00	2,836,076.10	13,903,923.90
	1.3 Equipment	KfW	2,000,000.00	194,500.11	1,805,499.89
	1.4 Capacity building, consultation and awareness raising	KfW	75,420.00	7,344.09	68,075.91
	Total		18,929,170.00	3,124,603.88	15,804,566.12
Output 2: Rehabilitation of affected communities' economic infrastructure to promote more resilient and sustainable livelihoods for both men and women	2.1 Consultancies and Technical Assistance Service	KfW	38,500.00	37,891.24	608.76
	2.2 Civil Works (Economic Infrastructure): Design, Construction and Supervision	KfW	803,000.00	-	803,000.00
	2.3 Small scale debris management (Ground preparation for land fill rehabilitation and local employment)	KfW	500,000.00	436,026.66	63,973.34
	2.4 Capacity Building, Consultation and Awareness Raising	KfW	48,998.40	1,619.41	47,378.99
	Total		1,390,498.40	475,537.31	914,961.09
Output 3: Other Direct Project Costs (Cross Cutting Output 1 and Output3)	3.1 Project Management Unit	KfW	1,915,766.40	598,598.06	1,317,168.34
	3.2 Programme Staff (Project Quality Assurance, Technical Guidance and Support oversight)	KfW	333,929.16	114,401.84	219,527.32
	3.3 Travel (for quality control/supervision; technical support; administrative support, oversight, etc) - Non-Consulting Personnel	KfW	100,320.00	72,387.79	27,932.21

	3.4 Other Operating Expenses	KfW	405,000.00	280,454.05	124,545.95
	3.5 Communications and Publications	KfW	24,464.00	7,862.21	16,601.79
	3.6 Evaluation and Audit	KfW	49,000.00	-	49,000.00
	Total		2,828,479.56	1,073,703.95	1,754,775.61
	GMS 8%		1,851,852.04	167,573.92	1,684,278.12
	Grand Total		25,000,000.00	4,841,419.06	20,158,580.94

*Accumulative figures from January 2019 to June 2020